

View virtual tour at:
visual4sale.com

Enter:

v4s# 275554



56 Mendip Crescent, London Ontario N6E 1H1

\$299,900

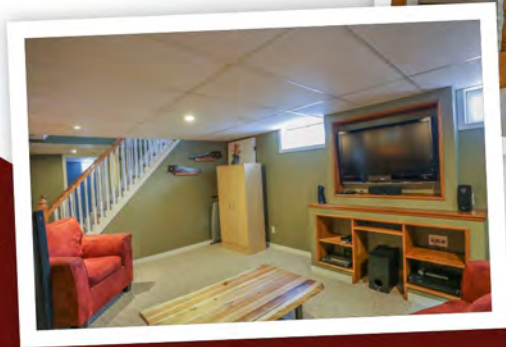
Property Information

- Property Type • Residential
- Property Style • 1 Storey
- Taxes • \$2,485 / 2018
- Lot Size • 54.99 x 100
- Year Built • 1975
- MLS® • 176064



Property Description

Located on quiet tree lined south end crescent in sought after Wesminster Park West. Close to schools, parks, trails and the 401. Situated on a wide fenced lot with summer sundeck and newer shed for all your garden tools. Lifetime metal roof, mostly newer windows, newer doors, soffits, fascia and eaves! The landscaping and walkways out front and back has been updated. Enjoy warm refinished hardwood floors, 2 full baths (main floor has been updated and lower level is brand new), open concept huge eat in kitchen with lots of sunny windows! The eat in kitchen also boasts ample cupboard space and a door to the sundeck for summer bbq's. The lower level was recently finished with family sized rec room, full bath and den.



Property Features

- Possession Flexible
- Near Ponds, Trails & Park
- Move in Condition
- Window Coverings Stay
- Close to 401 & Shopping
- Close to Library & Schools too



Joyce Byrne
Broker, ABR, SRS, MA, HBA
519-471-8888

joyce@homesforsaleinlondon.com
www.homesforsaleinlondon.com



Sutton Group Preferred Realty Inc.
Brokerage
181 Commissioners Rd. West
London, on., N6J 1X9

