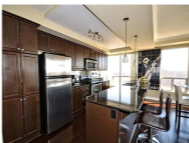




TYPE: Apartment Condo
AGE: 6 Years
TAXES: \$3,420 (2015)
CONDO FEES: \$392.87
POSSESSION: 60 Days (Flex)
INCLUDES: Heat, Water, Exterior & Ground Maintenance, Insurance, Management, Caretaker & Recreation Facilities
PROPERTY MANAGER:
NPM: 519-439-2227
HEAT/COOL: Energy Efficient Heat Pump, Central Air
BEDROOMS: 2
BATHROOMS: 2
PARKING: 1 Oversized Underground spot
INCLUSIONS: See our Home Book for List!



1030 Coronation Drive, Unit 611

\$289,900

MLS 581089

Stunning South East Vistas in Corner End Unit with floor to ceiling windows & spacious balcony! Fabulous contemporary interior boasting espresso cabinetry & granite counter-tops. Complimented by dark hardwood flooring & ceramic in both baths. Open concept living space upgraded with wall mount TV (included) & fireplace with custom console. Oversized dining area. Ideal for entertaining a crowd! LG front loading Washer & Dryer in laundry room...not a closet. Master includes console, floating shelves plus mirrored wall. Ensuite boasts tempered glass shower. Wall of shelves in 2nd bedroom stays. Extra shelving & custom shoe racks in all closets so storage is not an issue. Enjoy exercise, media, games & party rooms. Guest suite is \$50 nite. Exclusive building almost Sold Out!

HOME INSPECTION AVAILABLE

MORE INFO: CANADA'S MOST COMPLETE REAL ESTATE WEBSITE: www.homesforsaleinlondon.com



Joyce Byrne
Broker

519-471-8888
joyce@homesforsaleinlondon.com



Sutton Group Preferred Realty
London ON, Canada (519) 471-8888

