

### Exterior

- fully sodded
- professionally designed landscaping plan
- paving stone front walkway from driveway to front steps
- asphalt paved driveway
- paving stone patio approx. 10' x 10' in rear with privacy fencing
- screens for all opening windows
- exterior doors and trim painted with exterior grade oil base paint
- aluminum gutters and down spouts
- clay brick exterior as per design
- maintenance free vinyl siding
- steel embossed garage door
- all windows are vinyl clad wood with double glazed insul glass as per design
- all man-doors with direct entry to the home are steel insulated

### Foundation

- damp-proofing on exterior of foundation walls
- basement and garage floors poured concrete
- 9" steel reinforced foundation walls

### Structure

- 20 year asphalt roof shingles
- 3/8" sheathing on roof
- all sub floors, nailed, glued and screwed into floors joists

### Insulation

- wall systems consist of a combination of R-13 fiberglass batts and R5.5 cladmate exterior insulated sheathing
- R-40 blown in fiberglass in ceiling, R-32 fiberglass batt in some vaulted areas
- R-12 fiberglass batt with vapour barrier 24" below grade on basement walls

### Electrical

#### /Mechanical

- built-in fireplace with media centre where applicable
- high efficiency, forced air natural gas furnace
- gas fired power vented rental hot water heater
- 5 year parts and labour on heating and cooling systems
- kitchen range hood, vented to the outside
- fans in all bathrooms
- copper electrical wiring throughout
- freezer plug in basement at the hydro panel
- microwave plug in kitchen
- light in shower stall (where applicable)
- 100 amp. circuit breaker electrical panel
- heavy-duty receptacles for clothes dryer and stove
- electrical outlet and wiring only for future garage door opener
- weatherproof exterior electrical outlet connected to a safety ground fault circuit
- rough in for cable television (2) outlets and bell telephone (4) outlets
- rough in for future central vacuum

### Plumbing Fixtures and Accessories

- built-in dishwasher
- double compartment stainless steel ledgeback sink in kitchen
- single lever Moen kitchen faucet
- white coloured fixtures in bathrooms
- single lever Moen faucets on all vanity sinks
- insulated toilet tanks
- pressure balanced faucets in all showers
- rough in for future 3 piece bathroom in basement

### Exterior

- fully sodded
- professionally designed landscaping plan
- poured concrete front walkway from driveway to front steps 3' wide
- asphalt paved driveway
- interlocking brick patio approx. 10'x10'
- patio in rear with privacy fencing
- screens for all opening windows
- exterior doors and trim painted with exterior grade oil base paint
- aluminum gutters and down spouts
- clay brick exterior as per design
- maintenance free vinyl siding
- insulated steel embossed garage door
- windows are double glazed insul glass as per design
- all main doors with direct entry to the home are steel insulated

### Foundation

- damp-proofing on exterior of foundation walls
- basement and garage floors poured concrete
- 9" steel reinforced foundation walls

### Structure

- 15 year asphalt roof shingles
- 3/8" sheathing on roof
- all sub floors, nailed, glued and screwed into floor joists

### Insulation

- wall systems consist of a combination of R-13 fiberglass batts and R-5.5 cladmate exterior insulated sheathing
- R-40 blown in fiberglass in ceiling, R-32 fiberglass batt in some vaulted areas
- R-12 fiberglass batt with vapour barrier 24" below grade on basement walls

### Electrical/Mechanical

- high efficiency, forced air natural gas furnace
- gas fired, power vented, rental hot water heater
- 5 year parts and labour on heating and cooling systems
- kitchen range hood, vented to the outside
- fans in all bathrooms
- copper electrical wiring throughout
- freezer plug in basement at the hydro panel
- microwave plug in kitchen
- light in shower stall (where applicable)
- 100 amp. circuit breaker electrical panel
- heavy-duty receptacles for clothes dryer and stove
- electrical outlet and wiring only for future garage door opener

- weatherproof exterior electrical outlet connected to a safety ground fault circuit
- rough-in for cable television (2) outlets and Bell telephone (4) outlets
- rough-in for future central vacuum

### Plumbing Fixtures and Accessories

- double compartment stainless steel ledgeback sink in kitchen
- single lever Moen kitchen faucet
- white coloured fixtures in bathrooms
- single lever Moen faucets on all vanity sinks
- insulated toilet tanks
- pressure balanced faucets in all showers
- rough-in for future 3-piece bathroom in basement

### Interior Finishes

- custom designed kitchen and bathroom cabinetry from vendor's samples
- all bathrooms to have vanities
- microwave shelf in kitchen
- ceramic tile around tub in main bath, to the ceiling
- towel bar and tissue holder in each bathroom
- Newport series embossed paneled interior doors, painted
- colonial casing around doors and windows
- colonial style baseboard
- all archways to be wood cased
- painted spindles and stained handrail on stairs leading to basement
- textured ceilings throughout except kitchens, bath and laundry
- all carpeted areas to have 28 oz. nylon carpet from vendor's samples
- high density underpad under all carpeted areas
- kitchens, bathrooms and laundry to have vinyl seamless flooring from vendor's samples
- all walls to have one coat of primer and one coat of latex
- kitchens, bathrooms and laundry rooms to be oil semi-gloss
- all trim and baseboards to be semi-gloss latex
- interior of garage to be finished with one coat of taping and one coat of primer
- deadbolts on all exterior doors
- wire shelving in all closets

All homes covered by Z Group's exclusive  
**CUSTOMER CARE PROGRAM**  
and the  
Ontario New Home Warranty Program  
"Excellent Rating"

Our policy of continual improvement in design and construction requires that specifications, equipment, dimensions and prices be subject to change without notice.  
If you have any questions in this regard, please contact  
a sales representative for information. E & O.E.

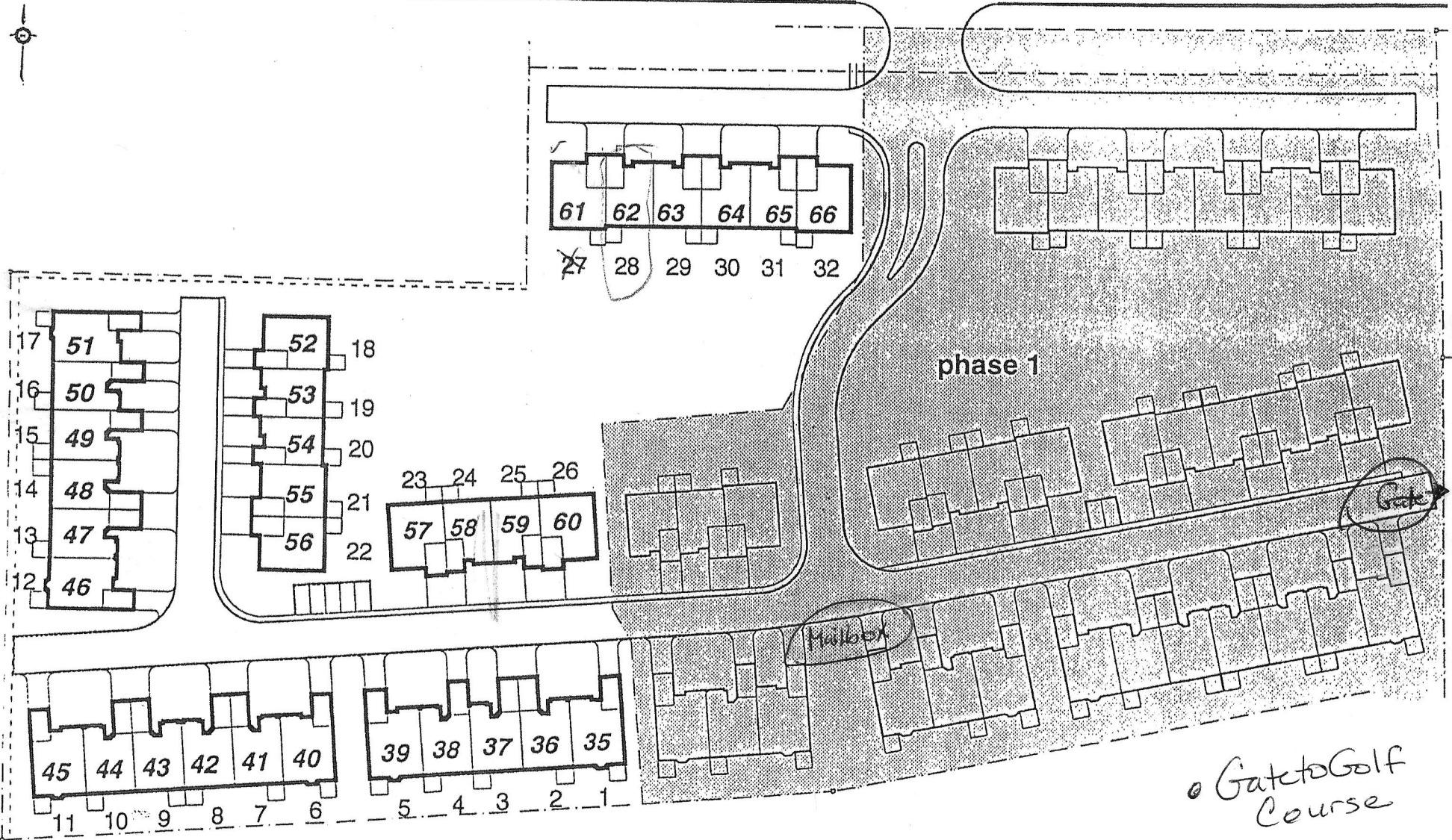
---

### **Interior Finishes**

- custom designed kitchen and bathroom cabinetry from vendor's samples
- all bathrooms to have vanities
- microwave shelf in kitchen
- ceramic tile around tub in main bath, to the ceiling
- towel bar and tissue holder in each bathroom
- newport series embossed paneled interior doors, painted
- colonial casing around doors and windows
- colonial style baseboard
- all archways to be wood cased
- painted spindles and stained handrail on stair leading to basement where applicable
- textured ceilings throughout except kitchens, bath and laundry
- all carpeted areas to have 28 oz. nylon carpet from vendor's samples
- high density underpad under all carpeted areas
- kitchens, bathrooms and laundry to have vinyl seamless flooring from vendor's samples
- all walls to have one coat of primer and one coat of latex.
- kitchens, bathrooms and laundry rooms to be oil semi gloss
- all trim and baseboards to be semi gloss latex
- interior of garage to be finished with one coat of taping and one coat of primer
- deadbolts on all exterior doors
- wire shelving in all closets

All homes covered by Z Group's exclusive **CUSTOMER CARE PROGRAM**  
and the  
Ontario New Home Warranty Program  
"Excellent Rating"

HAMILTON ROAD



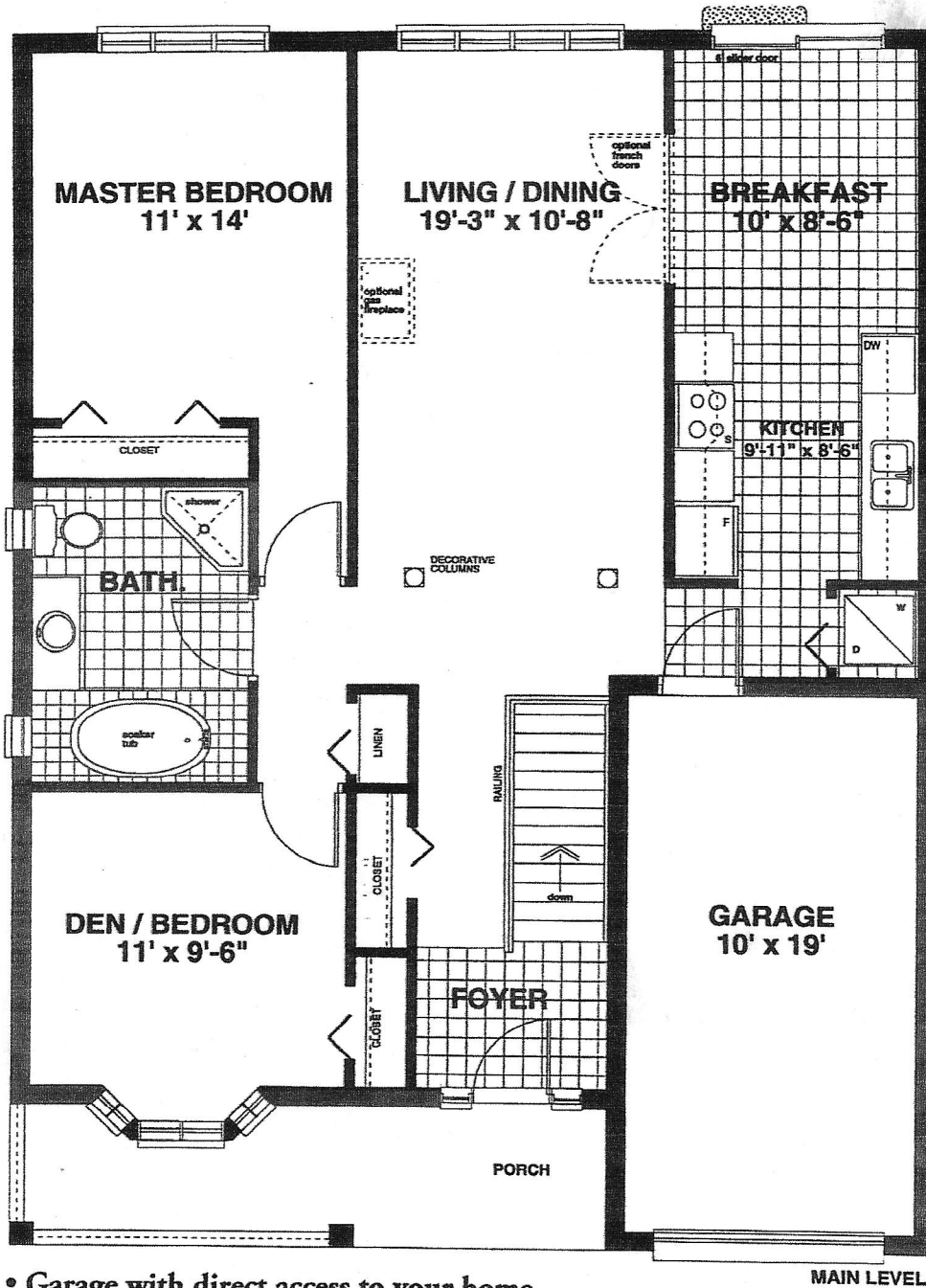
1 - 32 LEGAL NUMBERS  
 35 - 66 MUNICIPAL NUMBERS

o Gate to Golf Course

The 18th at East Park

# The Pinehurst 1080 sq.ft.

Available on lots: 52,56,57,60, 61\*,66\*—(\*walkout basement)



- Garage with direct access to your home
- Spacious eat in Kitchen
- Choice of central air or gas fireplace
- Large country style Front Porch
- Main floor Laundry area
- Luxurious Bathroom with shower stall and optional whirlpool



Note: Actual usable floor space may vary from the stated floor area. E. & E.O.